

Installing Horizon Rad Station Distributed

Franciscan Health System Information Technology Training Group

Table of Contents

System requirements for Horizon Rad Station™ Distributed.....	2
Display and hardware requirements.....	2
Software requirements for Horizon Rad Station™ Distributed	2
Installing Horizon Rad Station Distributed.....	3
Updating Horizon Rad Station™ Distributed.....	7
Setting up quick access to Horizon Rad Station Distributed.....	8
Adding an URL to the Favorites menu	10
Troubleshooting issue with Microsoft Internet Explorer® Version 6	11
Troubleshooting issue with Microsoft Internet Explorer® Version 8.....	15

Installing Horizon Rad Station™ Distributed (HRSD)

System requirements for Horizon Rad Station™ Distributed

This section describes the system requirements for Horizon Rad Station™ Distributed.

Network requirements

The minimum network speed requirements are:

- Broadband (Cable or ADSL)

Display and hardware requirements

The Horizon Rad Station™ computer must meet the minimum requirements specified in this section.

The following table describes the minimum system requirements:

Item	Minimum desktop requirement
Display	1280x1024 resolution in 24 or 32 bit color mode
CPU	Intel® Pentium® 4 or Core™ Duo
CPU speed	2.6 GHz
RAM	1 GB or higher
Free disk space	2 GB
Mouse	Mouse wheel

Software requirements for Horizon Rad Station™ Distributed

To use Horizon Rad Station™ Distributed, you need to have certain software installed on the Horizon Rad Station™ computer.

The following table describes the software requirements:

Software	Version
Web browser	• Microsoft® Internet Explorer® 6.0, 7.0 or 8.0
Operating system	• Microsoft® Windows® 2000 Professional (Service Pack 4) • Microsoft® Windows® XP Professional (Service Pack 2) • Microsoft® Windows Vista™ Home Premium (Service Pack 1)

Installing Horizon Rad Station™ Distributed (HRSD)

Installing Horizon Rad Station Distributed

This document describes how to install McKesson's **Horizon Rad Station Distributed** (HRSD) on your computer. Before you install Horizon Rad Station Distributed on your computer, verify that the following criteria are met:

Before you install Horizon Rad Station Distributed

- If you are using Windows® 2000 Professional or XP Professional, your Horizon Rad Station user name is assigned to the Microsoft® Windows® **Power Users group** or the role of **Administrator**.
- The computer is connected to the Horizon Rad Station Web server that provides access to the Horizon Rad Station™ Distributed installation software.
- Microsoft® Internet Explorer® is installed on the computer.
- You have obtained the Horizon Rad Station Distributed URL (URL, or Uniform Resource Locator = web address) from your local system administrator.

Steps for installing Horizon Rad Station Distributed

1. Open Microsoft® Internet Explorer®.
2. On the **Address** bar, complete the following steps:
 - In the **Address** field, type the following URL (web address) <https://pacs.sahpendleton.org/hrs/>, as shown below.



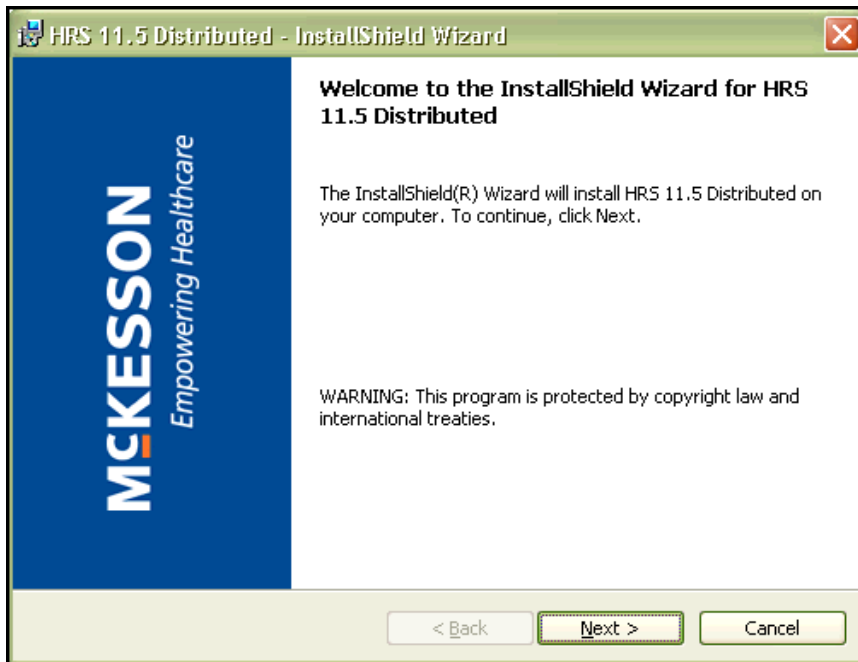
- Click the **Go** button (or press **Enter** on the keyboard).

Note: The URL is an Internet address that specifies the location of the Horizon Rad Station installation software. If you are using Microsoft® Windows Vista™, McKesson MIG recommends that you add the Horizon Rad Station Distributed URL to Internet Explorer® as a trusted site.

Installing Horizon Rad Station™ Distributed (HRSD)

The **Horizon Rad Station InstallShield Wizard** is started. See *Figure 1-4*.

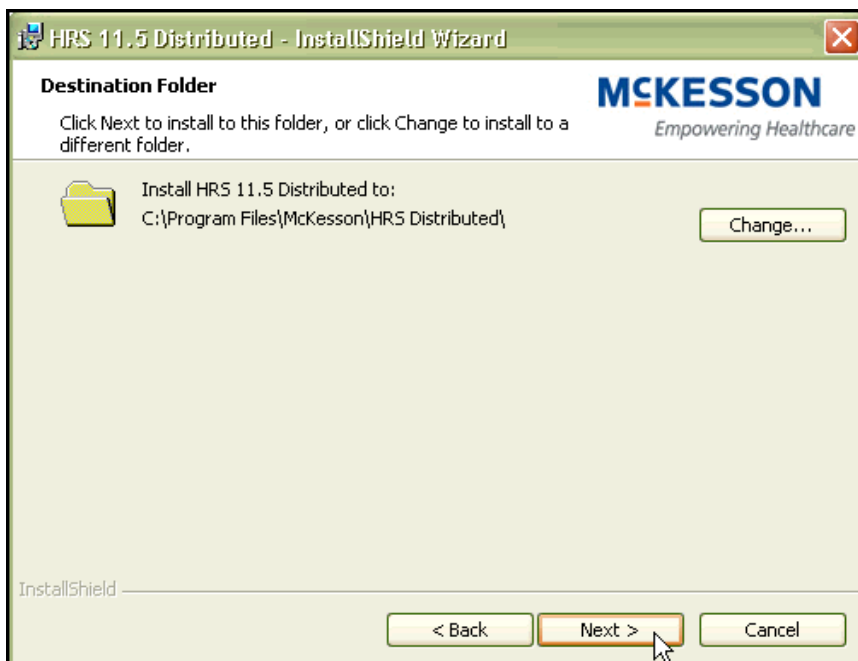
Figure 1-4 Horizon Rad Station InstallShield Wizard Welcome window



3. Click **Next**.

The **Destination Folder** dialog box is displayed.

Figure 1-5 Destination Folder dialog box

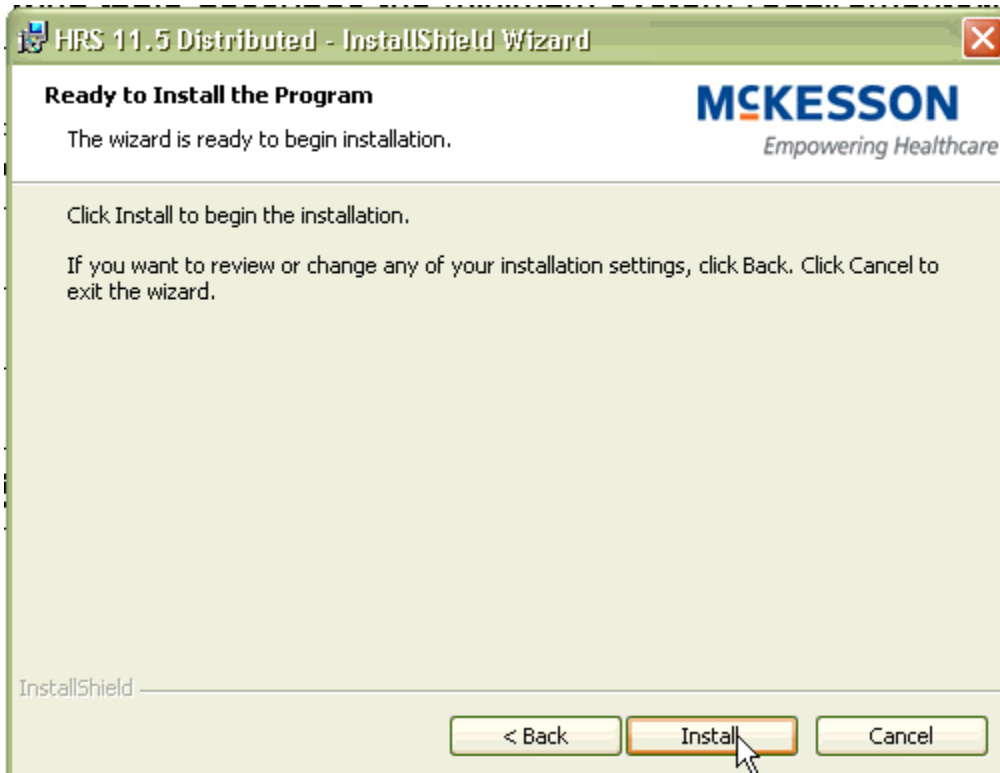


4. Click the **Next** button to install HRSD in the default Program Files folder.

Installing Horizon Rad Station™ Distributed (HRSD)

The **Ready to Install the Program** dialog box is displayed.

Figure 1-7 Ready to Install the Program dialog box



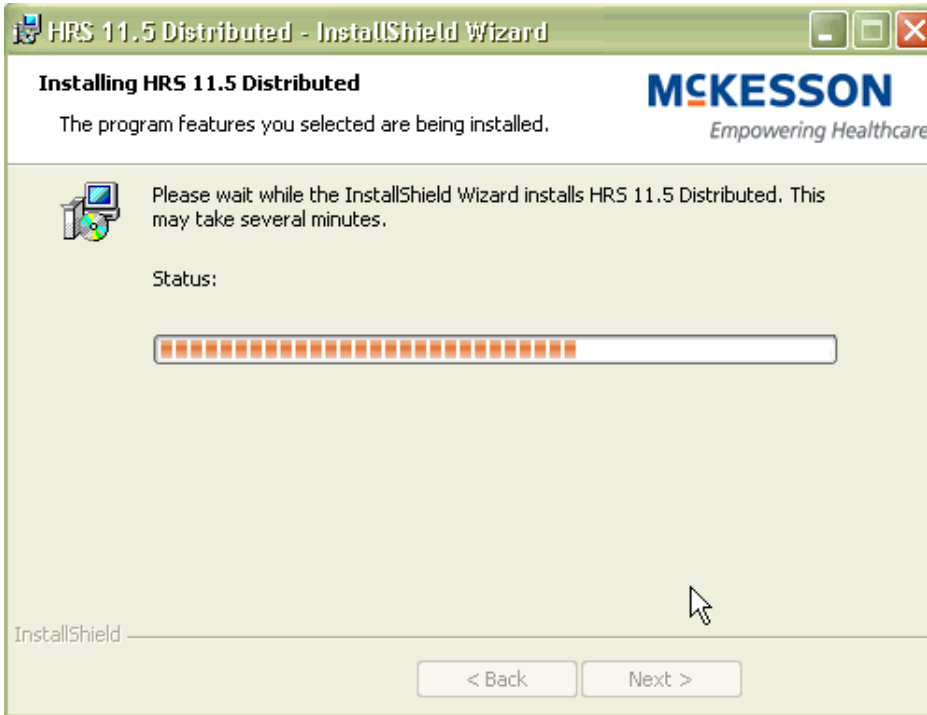
5. Click the **Install** button.

The **Installing HRS 11.5 Distributed** dialog box is displayed, indicating the installation progress.

(See next page.)

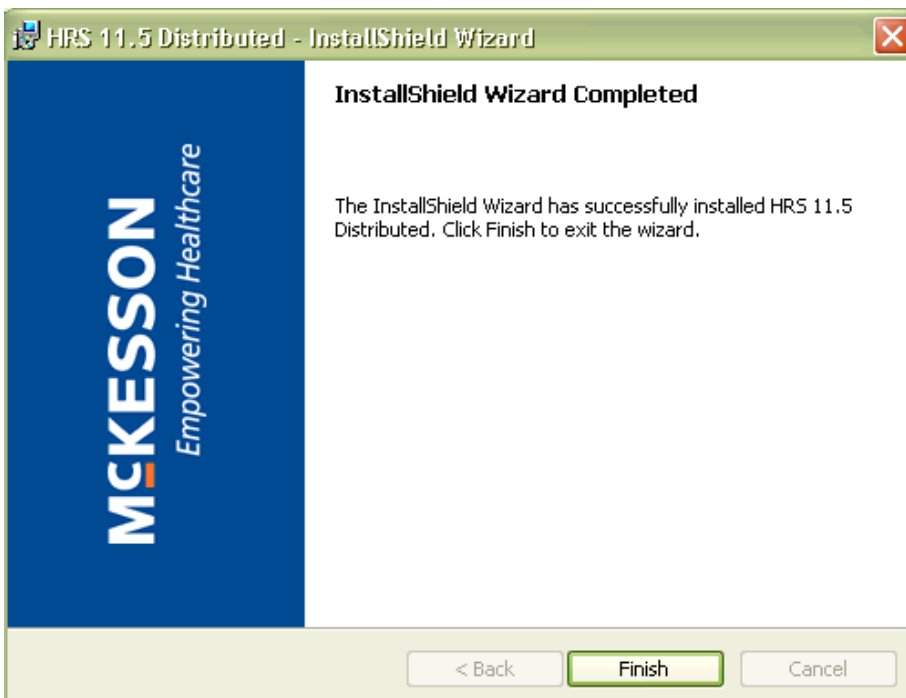
Installing Horizon Rad Station™ Distributed (HRSD)

Figure 1-8 Installing HRS 11.5 Distributed dialog box



When the installation is complete, the **InstallShield Wizard Completed** dialog box is displayed.

Figure 1-9 InstallShield Wizard Completed dialog box

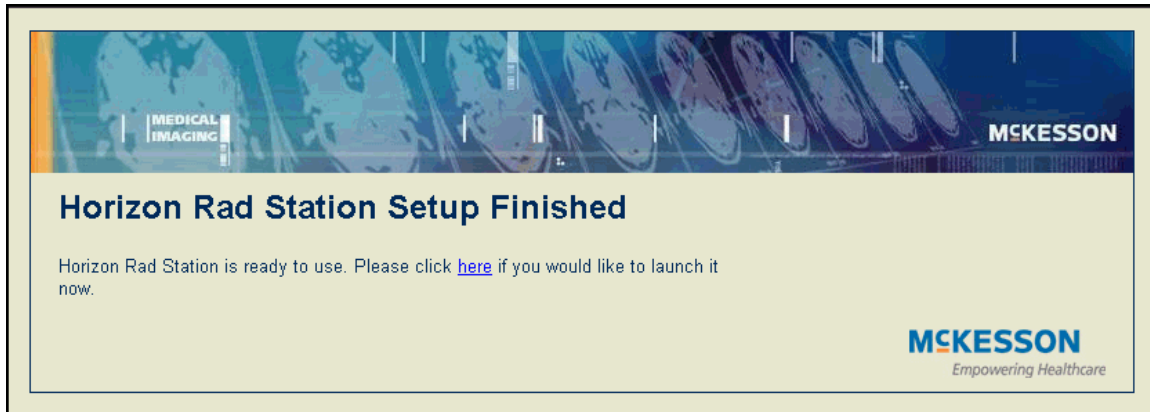


6. Click **Finish**.

Installing Horizon Rad Station™ Distributed (HRSD)

The **Horizon Rad Station™ Setup Finished** page is displayed.

Figure 1-10 Horizon Rad Station Setup Finished page



Note: To complete the installation, you must restart Internet Explorer®.

You are now ready to start Horizon Rad Station™ Distributed.

Updating Horizon Rad Station™ Distributed

You may be required to install Horizon Rad Station™ Distributed updates on your computer as they become available. When you start Horizon Rad Station™ Distributed, a message is displayed informing you that an update is available and is being transferred to your computer.

To install updates on your computer, one of the following conditions must be met:

- The Horizon Medical Imaging™ Update Service has been installed on your computer
- You are a member of the Windows® Administrators or Power User group

Steps for this task

To update Horizon Rad Station™ Distributed:

1. Start Horizon Rad Station™ Distributed.

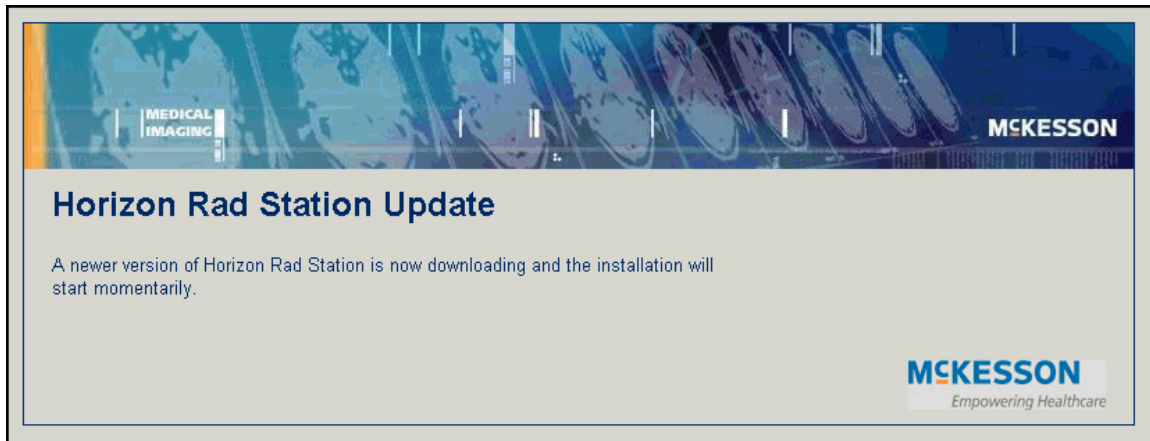
The **Horizon Rad Station™ Update** page is displayed informing you that an update is being transferred to your computer. See *Figure 1-17*.

The **InstallShield Wizard** is started and the **Welcome** message is displayed.

See *Figure 1-4*.

Installing Horizon Rad Station™ Distributed (HRSD)

Figure 1-11 Horizon Rad Station™ Update page



2. Click **Next**.

The **Setup Status** dialog box is displayed, indicating the installation progress.

See *Figure 1-8*.

1. Click **Finish**. The **Horizon Rad Station™ Setup Finished** page is displayed.

See *Figure 1-10*.

Note: To complete the installation, you must restart Internet Explorer®.

Setting up quick access to Horizon Rad Station Distributed

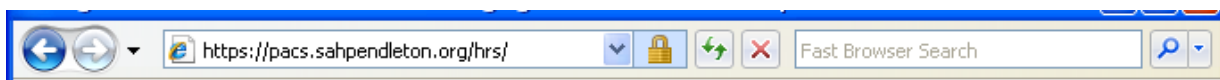
Multiple Horizon Medical Imaging™ systems may be available to you. To quickly access a Horizon Medical Imaging™ system, you can add its URL to the **Links drop-down** menu or the **Favorites menu** in Microsoft® Internet Explorer.

Adding an URL to the Links drop-down menu in Microsoft® Internet Explorer®

To add the Horizon Rad Station™ Distributed URL to the **Links** menu:

1. On the Microsoft® Internet Explorer® **Address** bar, complete the following steps:
 - In the **Address** field, type the following URL: <https://pacs.sahpendleton.org/hrs/>
 - Click the **Go** icon or press ENTER.

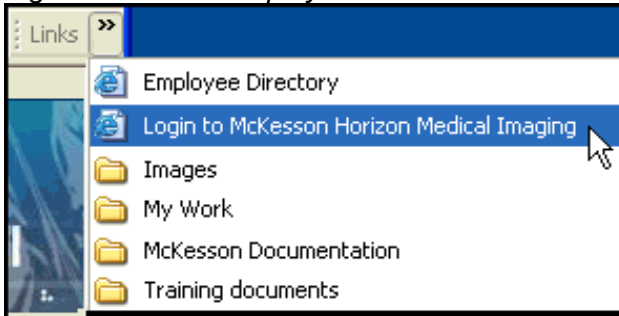
The **Horizon Rad Station Login** page is displayed.
2. Drag the icon for the URL from the **Address** field and place it across the Links icon.



Installing Horizon Rad Station™ Distributed (HRSD)

The URL has been added to the **Links** drop-down menu.

Figure 1-12 URL displayed in Links menu



3. Repeat steps 1 to 2 for each URL you want to add to the **Links** drop-down menu.

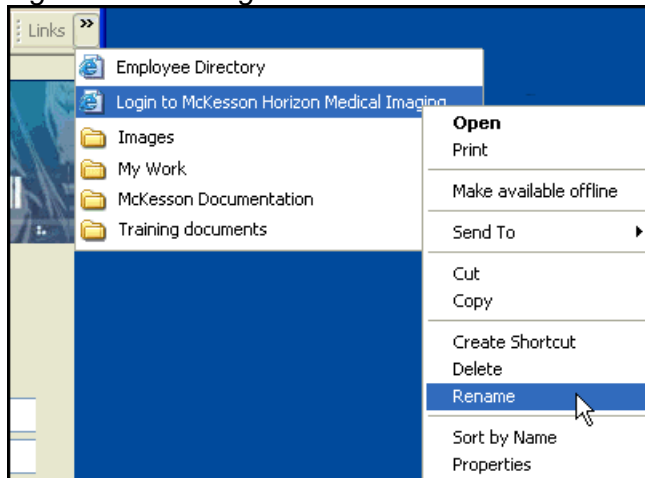
Renaming the URL in the Links drop-down menu

You can rename the URL in the **Links** drop-down menu, in order to describe the system you are accessing.

To rename the URL in the **Links** drop-down menu:

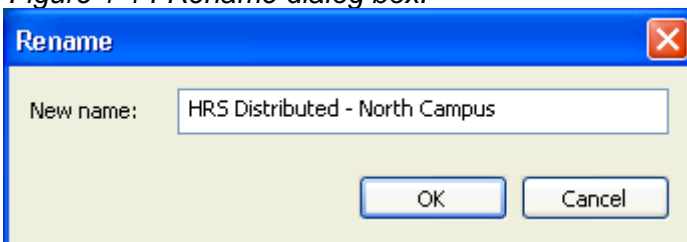
2. Right-click the URL in the **Links** drop-down menu, and select **Rename**.

Figure 1-13 The right-click menu invoked from the Links menu



3. Type the descriptive name in the **Rename** dialog box, and then click **OK**. The URL has been renamed.

Figure 1-14 Rename dialog box.



Installing Horizon Rad Station™ Distributed (HRSD)

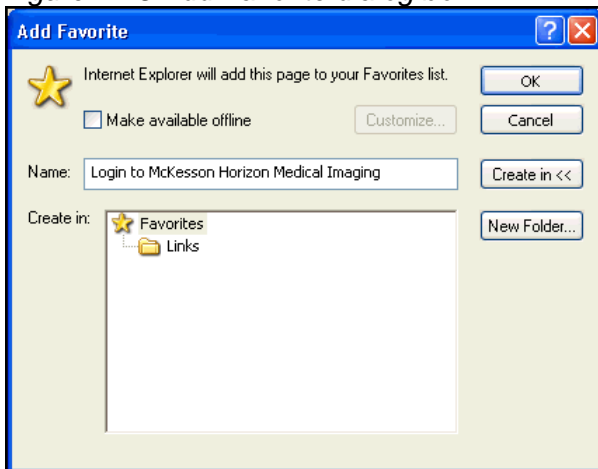
Adding an URL to the Favorites menu

To add an URL to the **Favorites** menu:

1. On the Microsoft® Internet Explorer® **Address** bar, complete the following steps:
 - In the **Address** field, type the following URL: <https://pacs.sahpendleton.org/hrs/>
 - Click the **Go** icon or press ENTER.
 The **Horizon Rad Station Login** page is displayed.

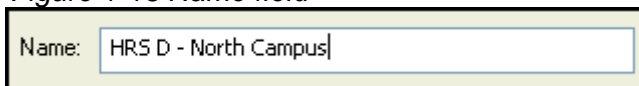
2. In the **Favorites** menu, select **Add to Favorites**. The **Add Favorite** dialog box is displayed.

Figure 1-15 Add Favorite dialog box



3. In the **Name** field, type a name that describes the Horizon Medical Imaging™ system.

Figure 1-16 Name field



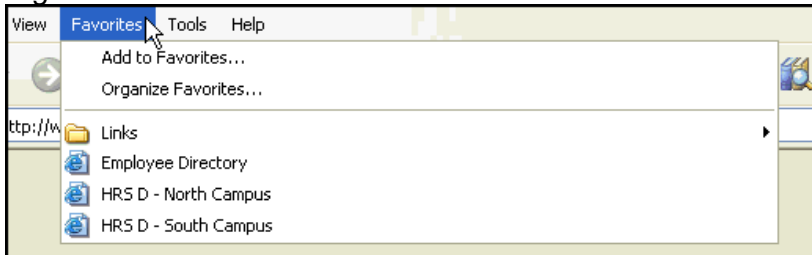
4. To place this **Favorite** in a specific folder, click the **Create in** button, and then select a folder:

If...	Then...
Using an existing folder	<ul style="list-style-type: none"> • Select a folder listed in the Create in section.
Creating a new folder	<ol style="list-style-type: none"> 1 Click the New Folder... button. The Create New Folder dialog box is displayed. 2 In the Folder name field, type a name for the folder. 3 Click OK, The new folder has been added to the Create in section.

Installing Horizon Rad Station™ Distributed (HRSD)

- Click **OK**. The **Favorite** is added to the **Favorites** menu.

Figure 1-17 Favorites menu



- Repeat steps 1 to 5 for each URL you want to add to the **Favorites** menu.

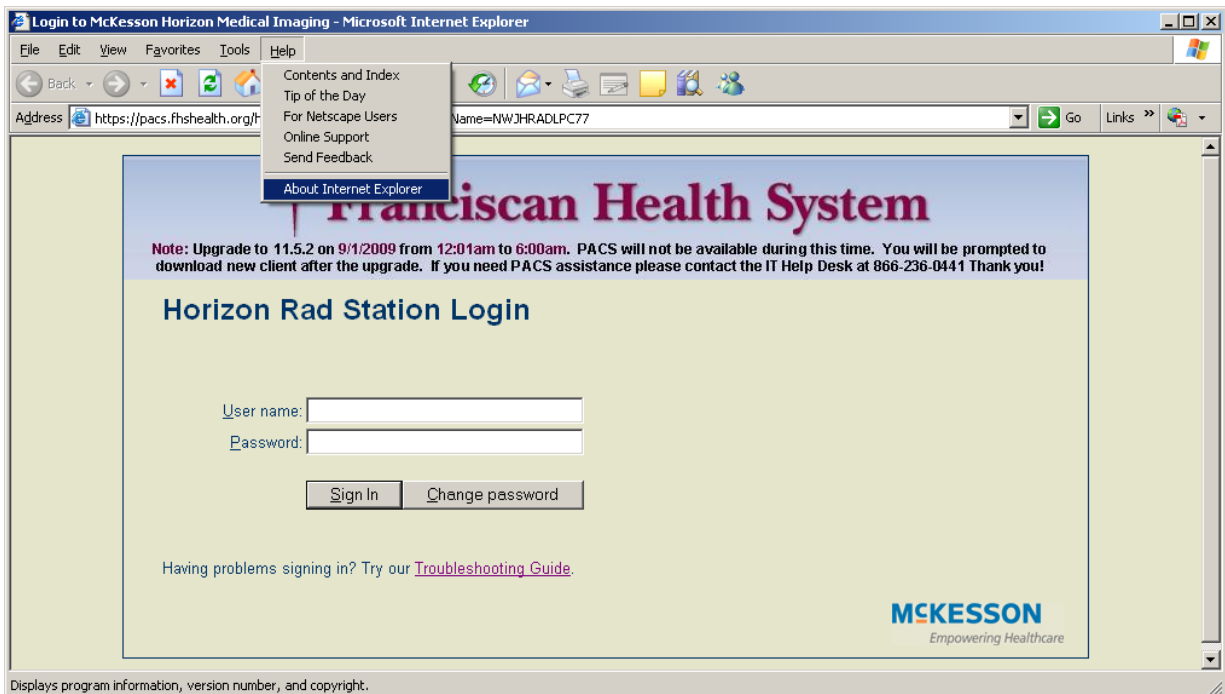
Troubleshooting issue with Microsoft Internet Explorer® Version 6

It is recommended that you use the Microsoft Internet Explorer® browser to launch HRSD and not other browsers such as Firefox and Safari.

HRSD is most compatible with version 7 of Internet Explorer. If you have version 6 of Internet Explorer, you will need to follow these steps:

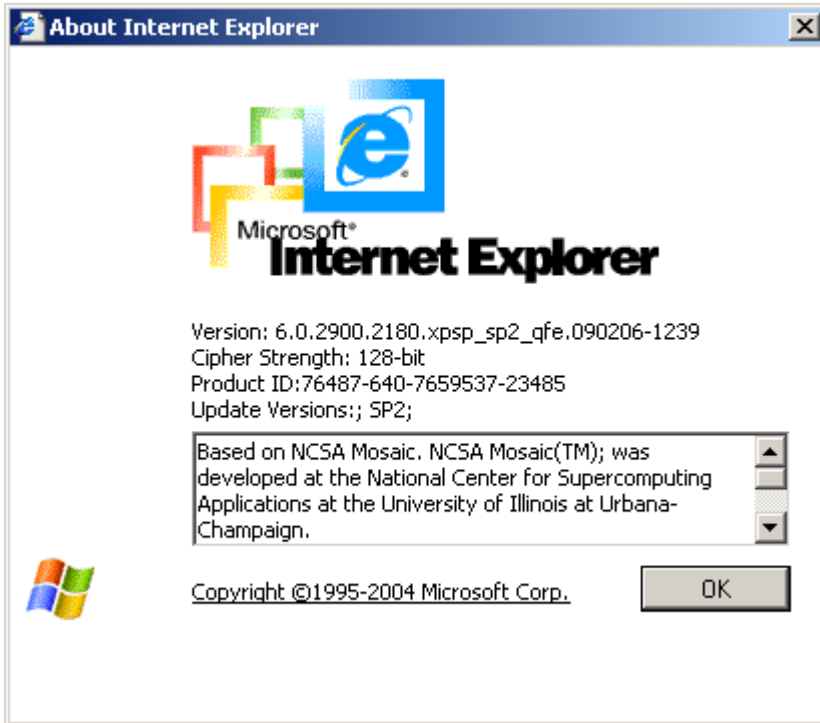
The steps are as follows:

- To check which version you are on, go to “Help” tab on your Internet Explorer.
- Select " About Internet Explorer”.

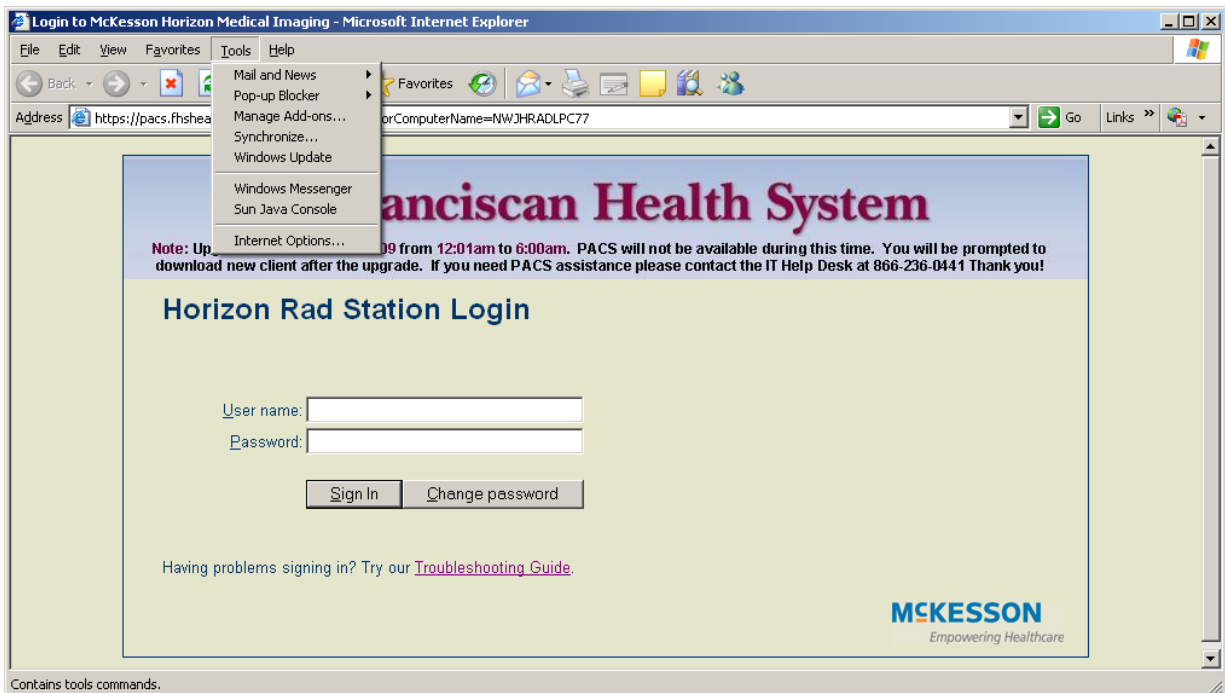


Installing Horizon Rad Station™ Distributed (HRSD)

3. A pop up box will display the version of the Microsoft Internet Explorer. Click OK to close this pop up box.

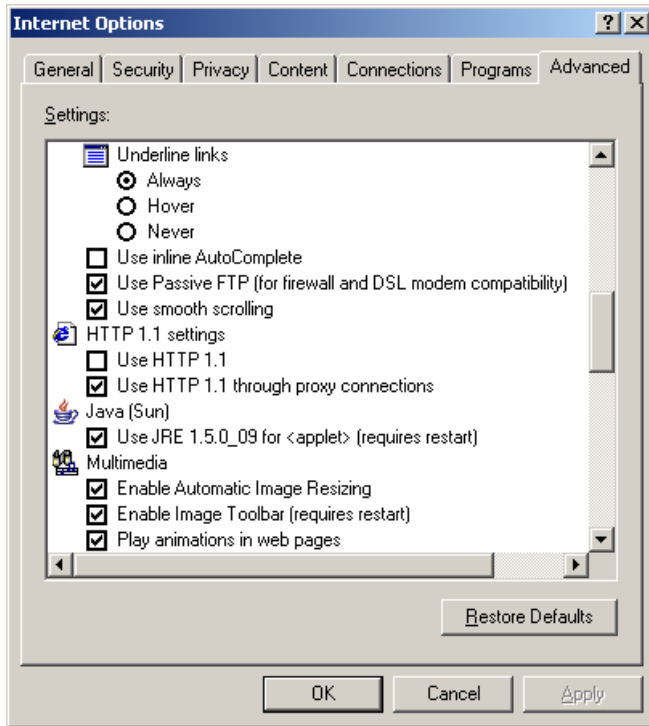


4. Select "Tools" tab and Internet Options.

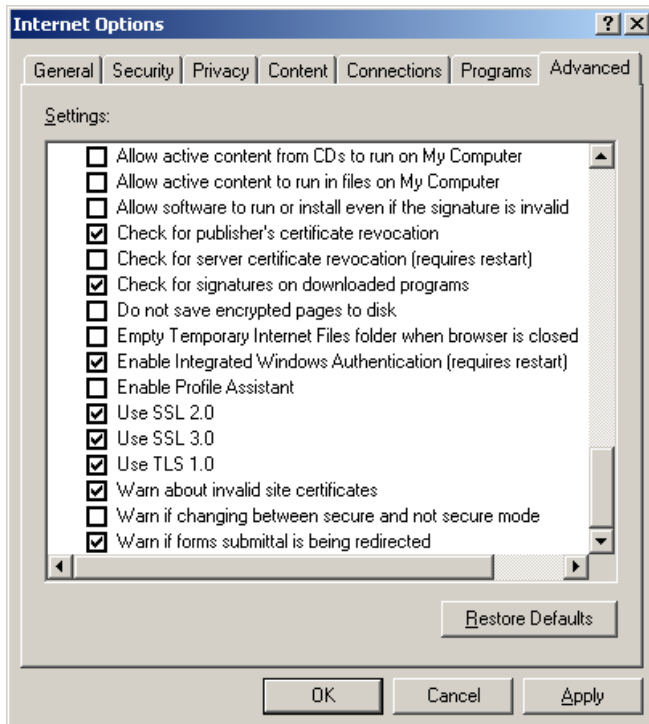


Installing Horizon Rad Station™ Distributed (HRSD)

5. Select the Advanced Tab
6. Scroll down and uncheck – Use HTTP 1.1
7. Check – Use HTTP1.1 through proxy connections

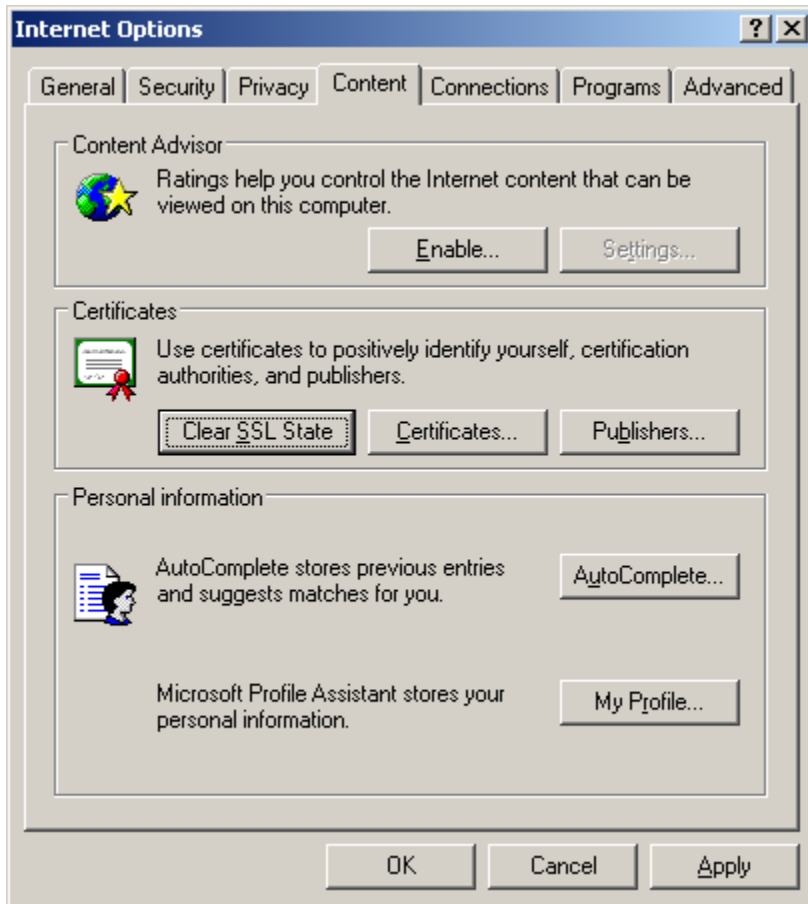


8. Use SSL 2.0, Use SSL 3.0 and Use TLS 1.0 may all be checked.

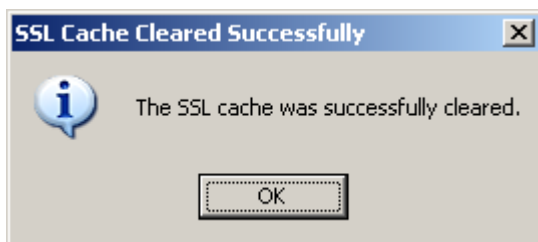


Installing Horizon Rad Station™ Distributed (HRSD)

9. Select the Content tab and click on the Clear SSL State button. (Windows 2000 does not have this button)



10. A pop up box will indicate that the SSL Cache cleared successfully, click OK.



11. To accept all changes you must click "Apply" then "OK" before closing the Internet Options.

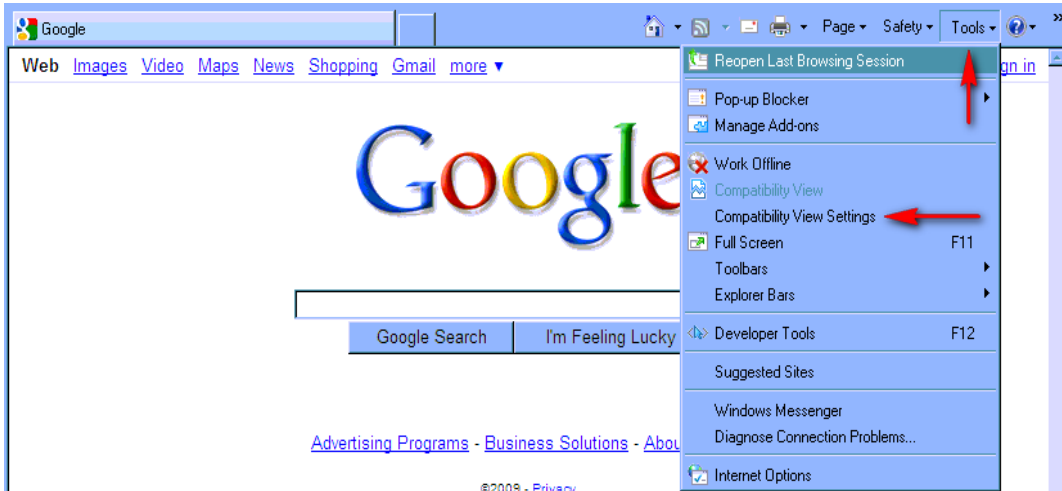
Note: To complete the installation, you must restart Internet Explorer®.

Installing Horizon Rad Station™ Distributed (HRSD)

Troubleshooting issue with Microsoft Internet Explorer® Version 8

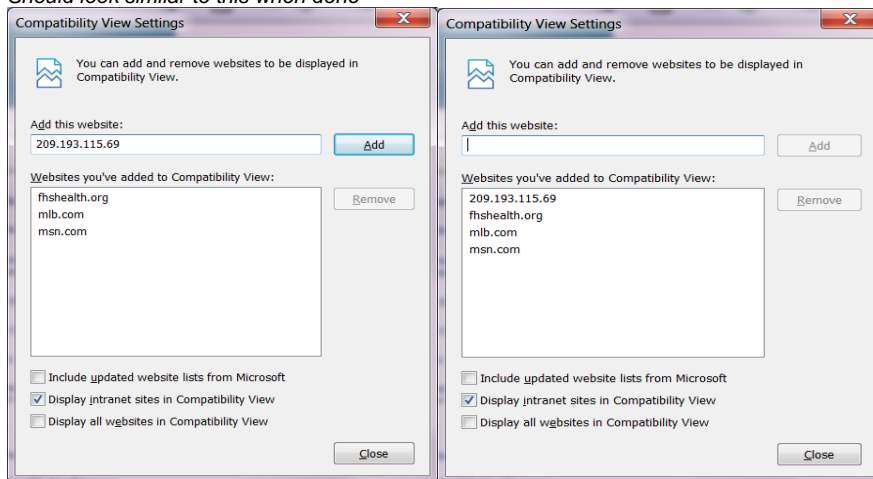
PACS is not yet certified for Internet Explorer 8 on Windows 7, so Internet Explorer 8 must be set to show PACS in Internet Explorer 7 compatibility view.

1. Open Internet Explorer browser window, click on **Tools**, and then click on **Compatibility View Settings**.



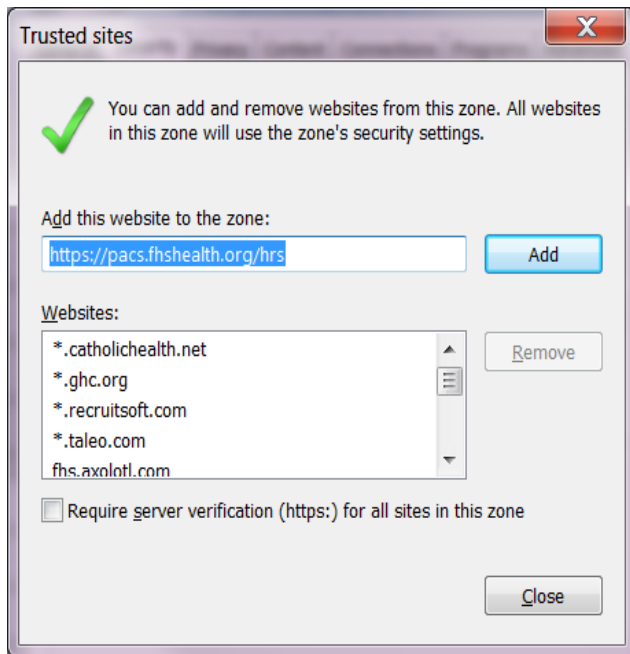
2. Add the following pacs.sahpendleton.org and 209.193.115.8

Should look similar to this when done

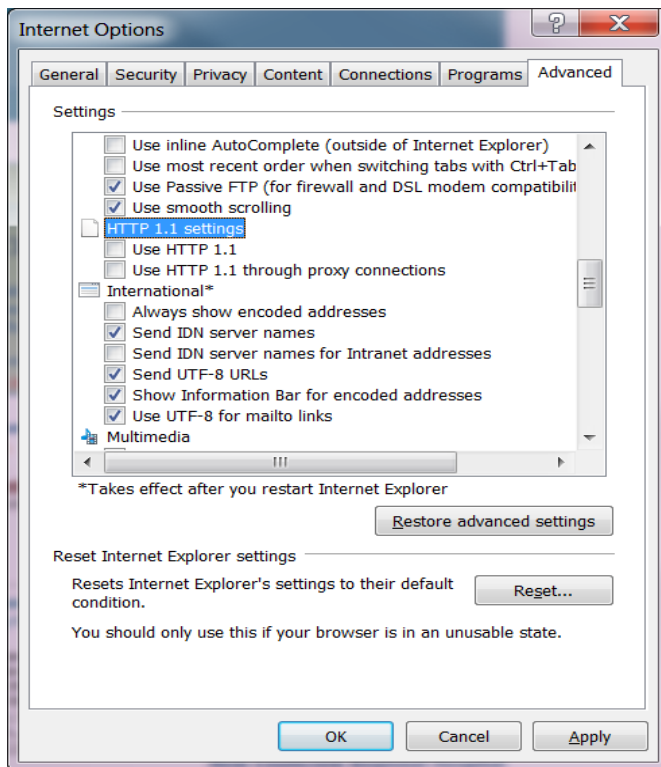


Installing Horizon Rad Station™ Distributed (HRSD)

3. **Next;** Go to Tools > Internet Options > Security tab > Trusted sites
4. **Add:** <https://pacs.sahpendleton.org/hrs/>



5. **Next;** Still in internet Options select Advanced > deselect HTTP 1.1 settings



6. **Close Internet Options** window and proceed to access PACS as normal